



Please paste the barcoded label here

TOTAL MARKS

NATIONAL SENIOR CERTIFICATE EXAMINATION
NOVEMBER 2022

MUSIC PAPER II

EXAMINATION NUMBER

--	--	--	--	--	--	--	--	--	--	--	--	--	--	--	--	--	--	--	--

Time: 1½ hours

50 marks

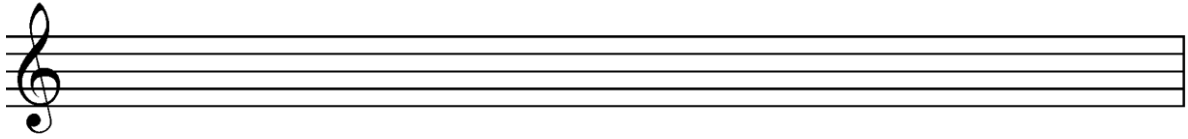
PLEASE READ THE FOLLOWING INSTRUCTIONS CAREFULLY

1. This question paper consists of 8 pages and a Resource Booklet of 6 pages (i–vi). Please check that your question paper is complete. Detach the Resource Booklet from the middle of your question paper. The Resource Booklet includes one page for rough work.
2. All questions must be answered on this question paper. Do not answer any questions in an Answer Booklet.
3. Music notation must be written using a sharp pencil. The rest of the paper must be answered in pen.
4. Write legibly and present your work neatly. Do not use Tippex.
5. Two pages of blank manuscript (pages 7 and 8) are included at the end of the paper. If you run out of space for an answer, use these pages. Clearly indicate the number of your answer should you use this extra space.

QUESTION	MAXIMUM MARK	ACHIEVED
1	16	
2	19	
3	15	
TOTAL	50	

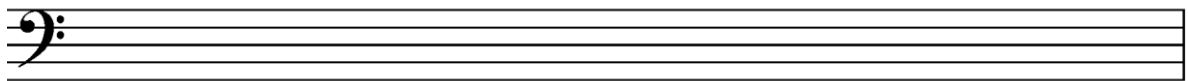
QUESTION 1

- 1.1 Write the scale of A \flat major without a key signature. Write the scale using quavers in compound quadruple time and complete the bar with rests.



(2)

- 1.2 Write the scale of G \sharp melodic minor, with a key signature, ascending and descending. Write the scale using crotchets.



(2)

- 1.3 Insert a clef and accidentals to create the scale of B \flat harmonic minor.

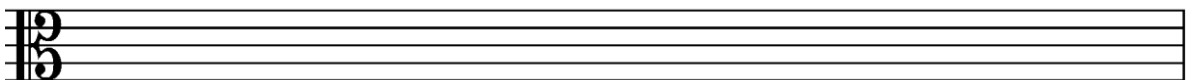


(2)

- 1.4 Identify the blues scale that is correctly written below.

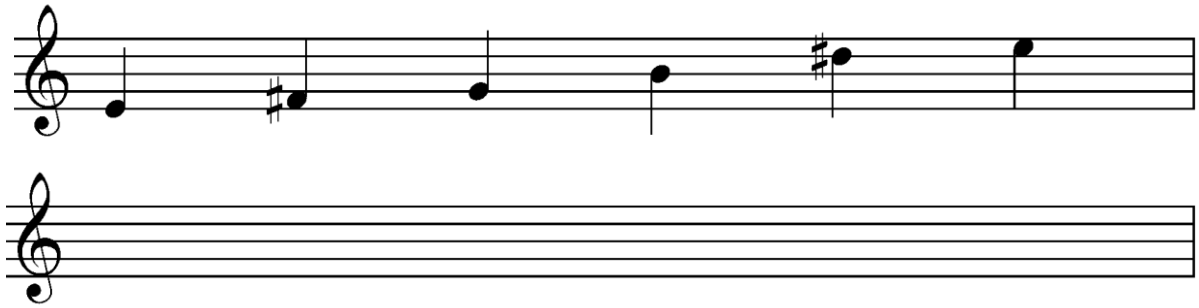
(1)

- 1.5 Write the whole tone scale beginning on G \flat , without a key signature, ascending.



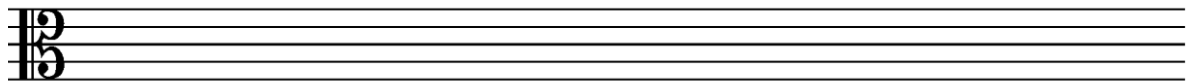
(1)

1.6 Circle two wrong notes in the E major pentatonic scale written below. Then, rewrite the scale correctly.



(2)

1.7 Write the Phrygian mode on F# without a key signature. Write the mode using one bar in an irregular time signature.



(3)

1.8 The following cadence can be described as:

	A plagal cadence in D major	
	An interrupted cadence in C# minor	
	An imperfect cadence in G# minor	

(1)

1.9 Describe the notation below by completing the table that follows.

Major Key:	Technical name of note:
Minor Key:	Technical name of note:

(2)
[16]

QUESTION 2

Refer to **APPENDIX A** in the Resource Booklet. Appendix A contains extracts from a Theme and Variations by W.A. Mozart.

2.1 Identify the form of the theme (Bars 1–24).

_____ (1)

2.2 Describe a rhythmic difference between the theme and each of the variations which follow.

Variation 3: _____
_____ (1)

Variation 8: _____
_____ (1)

Variation 13: _____
_____ (1)

2.3 Use the given elements to show one more difference between the theme and each of the following variations.

Variation 3 – melody: _____
_____ (1)

Variation 8 – tonality: _____
_____ (1)

Variation 13 – tempo: _____
_____ (1)

2.4 Identify the non-harmonic notes labelled 'W', 'X', 'Y', and 'Z'.

W: _____

X: _____

Y: _____

Z: _____ (2)

2.5 Identify the compositional techniques labelled 'P' and 'Q'.

P: _____

Q: _____ (1)

2.6 Identify the intervals labelled 'A', 'B' and 'C'.

A: _____

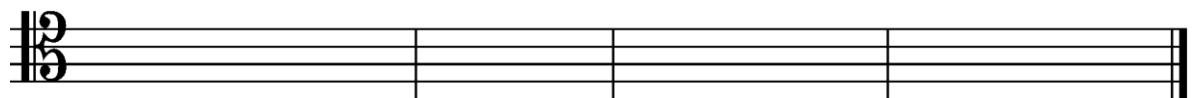
B: _____

C: _____ (3)

2.7 Transcribe the following extract as instructed:



2.7.1 Transcribe the extract into the tenor clef at the same pitch. Use a key signature.



(3)

2.7.2 Transpose the extract up a perfect fifth so that it would sound the same when played by a horn in F. Do not use a key signature.



(3)

[19]

QUESTION 3

3.1 On the extract below, figure the chords labelled 'D', 'E', and 'F'. State the key.

(4)

3.2 Identify the cadence labelled 'G'.

_____ (1)

3.3 Harmonise the given progression in four-part harmony. State the key.

Ib IV iib V7 I

(6)

3.4 Harmonise the given soprano in four-part harmony to create a passing progression. State the key and figure the chords you write.

(4)
[15]

Total: 50 marks

ADDITIONAL SPACE (ALL QUESTIONS)

**REMEMBER TO CLEARLY INDICATE AT THE QUESTION THAT YOU USED THE
ADDITIONAL SPACE TO ENSURE THAT ALL ANSWERS ARE MARKED.**

