

**ISIXHOSA ULWIMI LOKUQALA OLONGEZELELWEYO: IPHEPHA II**  
**ISIXHOSA FIRST ADDITIONAL LANGUAGE: PAPER II**

Ixesha: 2½ liyure

Amanqaku: 100

---

**IMIYALELO**

1. Eli phepha linamaCANDELO amabini u-A no-B.  
ICANDELO A: Inoveli  
ICANDELO B: Imihlathi nemihlathana
  2. KWICANDELO A – Phendula YONKE IMIBUZO KUMBUZO WOKU-1 NAKOWESI-2.  
– Khetha phakathi koMBUZO WESI-3 NOWESI-4.  
– Khetha phakathi koMBUZO WESI-5 NOWESI-6.
  3. KWICANDELO B – Bhala umhlathi omde ube MNYE, nomhlathana OMNYE omfutshane.
  4. Phendula imibuzo emiNE iyonke.
  5. Phendula yonke imibuzo ngesiXhosa.
  6. Umthamo wempendulo yakho mawukhokelwe ngamanqaku ombuzo.
  7. Nombola iimpendulo zakho ngendlela ekunonjolwe ngalo kwiphepha lemibuzo.
  8. Bhala ngokucocekileyo nangokucacileyo.
-

**ICANDELO A      UNCWADI**

**INOVELI: *Nyana Wam! Nyana Wam!* – W. K. Tamsanqa**

**UMBUZO 1      UMHLATHI NGABALINGANISWA NOMXHOLO**

**1.1      Funda isicatshulwa uze wandule ukuphendula imibuzo ngaso.**

Wathi ukuba ayiqale intetho yakhe lwabonakala uninzi lwabantu lumana ukukrweceza emaphepheni lubhala kodwa yathi iqina intetho yakhe kwaye kungekho namnye obhalayo ngaphandle kweentatheli zamaphepha-ndaba, koko wonke umntu ekhamisile ethe ntshoo ngamehlo kuye ethe chu olo siba ebebhala ngalo, ekhamisile ndithetha nempukane edlulayo yayingazingenela nje emlonyeni ingenamqandi. Kwamane ukulenyeka imibane abathathi-mifanekiso bezenzela. Bubonke obo bumenye-menye abuzange buwuphazamise umtsalane nomdla entethweni yakhe, waye naye engaqhwanyazi nokuqhwanyaza yiloo mibane, ingamothusi okanye imphazamise entethweni yakhe. Banga bonke abantu basuka bangathi yimifanekiso eqingqwe yancanyathiselwa kwezo zihlalo babehleli kuzo kungekho namnye ushukumayo, ndithetha kunzima nokuzonwaya oku ngokunga ngokuzonwaya kwakhe woba uphazamise olu ncuthu lwale ntetho yalo mAfrika aphoswe ngamabakala athile. Ndithe kuwe emva kokuba isithethi ngasinye sithethile kwakuqhwatywa, kodwa akuba egqibile ukuthetha uMangaliso akuzange kuqhwatywe basuka bamthi ntshoo ngamehlo abantu bemangalisiwe. Yaphantsa ukuphela imizuzu emithathu emile uMangaliso elinde abanemibuzo kuba kwakuthi sakuba sithethile isithethi kubuzwe imibuzo.

- 1.1.1 Ngubani lo mlinganiswa wenza intetho? (1)
- 1.1.2 Uthini umxholo wentetho yakhe? (2)
- 1.1.3 Nika iindidi zibe MBINI zonqulo ezazikho apha. (2)
- 1.1.4 Chaza izinto ezazisenziwa ngabantu ukubonisa umdla kule ntetho. (2)
- 1.1.5 Khupha isivakalisi esibonisa ukuba lo mlinganiswa wayengoyiki kwaye ezithembile ngethuba esenza intetho yakhe. (1)
- 1.1.6 Yeyiphi eminye imibandela ekwakuxoxwa ngayo? Chaza ibe MITHATHU. (3)
- 1.1.7 Le ngxoxo yenzeka kweliphi ilizwe? (1)

**[12]**

1.2 Tshatisa umlinganiswa okuKholam A nentetho ekuKholam B. Bhala inani nonobumba kuphela.

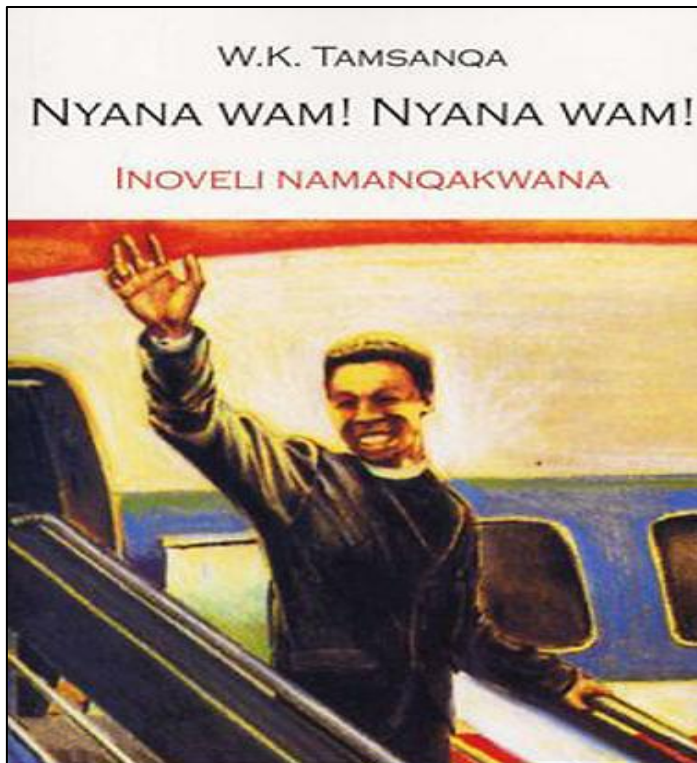
Umzekelo: 1.2.11 (k)

UKholam A	UKholam B
1.2.1 UMatron	(a) "Uyakundinceda Thole ngenchwadi yaso eso sifundo."
1.2.2 UNomsa	(b) "Nomsa kuqhubekani?"
1.2.3 Umqhubi wemoto	(c) "Khawutsho ke mfo wam, njengokuba ufikile nje ucinga ntoni?"
1.2.4 UThozama	(d) "Thixo wamaZulu! Nguye. Ngumntwan'am."
1.2.5 UFikizolo	(e) "Tshom'am, ndingaxola nokuba andithethanga naye, ukuba ndingakhe ndimthi tshe ngeliso."
1.2.6 UJoe	(f) "Kutheni na sthandwa uyalahleka?"
1.2.7 UThemba	(g) " <i>Who is this Reverend Thozama?</i> "
1.2.8 Utitshala uZolile	(h) "Ndifuna sitshate Bhelekazi, ube ngumfazi wam sahlulwe kukufa sobabini."
1.2.9 Ubaw'uMkwayi	(i) "Khawubambe ntang'am uphozise amanxeba ayizolo."
1.2.10 UThole	(j) "Mfondini akuthanga uya eGcuwa?"

[10]

## UMBUZO 2

Jonga uqweqwe lwencwadi uze wandule ukuphendula imibuzo engezantsi.



- 2.1 Injani inkangeleko yobuso balo mlinganiswa ombona kweli qweqwe? Khetha impendulo echanekileyo kwezi zingezantsi.
- A Ukhathazekile  
B Udanile  
C Wonwabile (1)
- 2.2 Uvela phi apha uMangaliso? (1)
- 2.3 Ucinga ukuba kutheni ephakamisa isandla sakhe? (1)
- 2.4 Loluphi uphawu kuye olubonisa ukuba ungumfundisi? (1)
- 2.5 Sesiphi esi sikhululo akuso? Khetha impendulo echanekileyo kwezi zingezantsi:
- A Sisikhululo sebhasi.  
B Sisikhululo senqwelo-moya.  
C Sisikhululo senqwelo yamanzi. (1)
- 2.6 Nika amagama abafundisi ababini ababeze kumkhawulela kule ndawo. (2)
- 2.7 Nika igama lecawa yamaWesile awamkelwa kuyo uThole eRhawutini. (1)

**[8]**

## INCOKO

Khetha isihloko sibe siNYE kwezi zingezantsi ubhale incoko.

Incoko yakho mayibe phakathi **kwamagama ali-130** ukuya **kumagama ali-180** ubude.

Khetha phakathi **koMBUZO WESI-3** no**MBUZO WESI-4**.

Bhala isihloko sencoko oyikhethileyo.

## UMBUZO 3

Bhala incoko phakathi kukaThole noNomsa beqala ukudibana eOK Bazaar nasebhasini egodukayo.

Chaphazela ezi ngongoma:

- UThole makenze isenzo esibonisa uthando kuNomsa.
- UNomsa makabulele uThole ngeso senzo.
- UThole makazazise kuNomsa.
- UNomsa makabonise umdla kuThole ze azazise naye kuThole.
- Ebhasini egodukayo uThole makabonise uNomsa isithuba somsebenzi awubone ephepheni.
- UThole makaxelele uNomsa ukuba ngumsebenzi onjani na lo awubonayo.
- UThole makabuze uNomsa ukuba kunganjani ukuba unokwenza isicelo sawo lo msebenzi.
- UNomsa makaxelele uThole indlela angaziva ngayo ukuba unokwenza njalo.
- UThole makaphendule ngokuzithemba ukuba uza kusifumana isithuba salo msebenzi.

**[Isakhiwo sedayalogu naso siyakuthathelwa ingqalelo.]**

**[15]**

## OKANYE

## UMBUZO 4

Gqibezela incoko phakathi kukabaw' uMkwayi nabafana awayehlala nabo eNkomponi.

*Abafana badiniwe abakhange balale ngezolo kuba bebesemvuselelweni. Kungena ubaw' uMkwayi esothuka ukuba babe abakavuki ngelo xesha.*

Umfana: Sakubona baw'uMkwayi.

4.1 **Ubaw'uMkwayi: ...** (2)

Umfana: Asikhange silale kaloku baw'uNgconde. Obu busuku besitshotsha.

4.2 **Ubaw'uMkwayi: ...?** (1)

Umfana: Emvuselelweni aph'eGeorge Goch elokishini. Kutheni ungayanga wena?

4.3 **Ubaw'uMkwayi: ...** (2)

Umfana: Imvuselelo ayikhethe qaba nagqobhoka baw'umKwayi. Wonke umntu uvunyelwe, nangoku ungena sithetha ngeqaba eliguqukileyo ngabo obu busuku.

4.4 **Ubaw'uMkwayi: ...?** (1)

Umfana: Kuthiwa lelakuCentane.

4.5 **Ubaw'uMkwayi: ...?** (1)

Umfana: Nantso ke into esingayaziyo.

4.6 **Ubaw'uMkwayi: ...?** (1)

Umfana: Uguquko alunamntu ungakanani. Ungaguquka nje lula.

4.7 **Ubaw'uMkwayi: ...?** (2)

Umfana: Nasemini nje ke baw'uMkwayi isaqhuba inkonzo, ngoko ke khehle lam kuya kufuneka ukuba sikhe sicothoze nawe uyokuzivela. Uyayikhwaza ingozi umfana phaya.

4.8 **Ubaw'uMkwayi: ...?** (1)

Umfana: Yena lo mfundisi ufikayo.

4.9 **Ubaw'uMkwayi: Lo kuthiwa weza nge ...?** (1)

Umfana: Ewe.

4.10 **Ubaw'uMkwayi: ...** (1)

4.11 **Umfana:** Asimazi baw' uMkwayi, kodwa ke inye into endiqiniseke kuyo, ... lowa. (1)

4.12 **Ubaw'uMkwayi:** Nithini bantwana bam? Nithi ngumXhosa lo ... kangaka? (1)

[15]

## ISINCOKO

Khetha isihloko sibe si**NYE** kwezi zilandelayo ubhale ngaso isincoko.

Phendula **UMBUZO WESI-5 okanye UMBUZO WESI-6.**

Isincoko sakho masibe phakathi **kwamagama ali-180** ukuya kumagama **angama-200** ubude.

### UMBUZO 5

Jonga indlela ekuboniswe ngayo uthando kwaba balinganiswa bachazwe ngezantsi. Bhala umhlathi ngengongoma nganye kwezi zine (4) uzinikiweyo. Ezi ngongoma mazibe sisiqu sesincoko sakho.

#### 5.1 Uthando phakathi kukaThole noThozama

- Chaza izinto zibe NTATHU ezenziwe nguThozama ukubonisa uthando lwakhe kuThole. (3)
- UThole umbonisa njani uThozama ukuba uyambulela? (2)

#### 5.2 Uthando phakathi kukaThole noNomsa

- Xela ukuba babedibana phi aba babini. (1)
- Xela ukuba yintoni eyatsala uThole kuNomsa. (1)
- Zintoni ezibonisa ubuxoki kuthando lwesi sibini? Nika zibe MBINI. (2)
- Chaza umahluko okhoyo phakathi kothando lukaThole noNomsa naphakathi kothando lukaThole noThozama. (2)

#### 5.3 Uthando phakathi kukaJoe noNomsa

- Chaza isimo awabakuso uNomsa xa kufika uJoe esazonwabise noThole. (2)
- Uhlobo wayekhangeleka ngalo lubonisa ntoni ngothando lwabo? (1)
- Chaza ukuba kwenzeka ntoni kuThole ngale mini. (2)
- Yeyiphi ingozi awayezifaka kuyo uThole ngokuthanda uNomsa? (1)

#### 5.4 Uthando phakathi kukaFikizolo noThole

- Lubonisa ntoni uthando lukaFikizolo kuThole? (1)
- Nika izinto zibe MBINI ezixhasa impendulo oyibhale ngasentla. (2)

**[Isakhiwo sesincoko naso siya kuthathelwa ingqalelo.] (5)**  
**[25]**

## OKANYE

## UMBUZO 6

Bhala isincoko ubonise ubumbano noxolo kusapho lukaThole.

Bhala umhlathi ngengongoma nganye kwezi zine (4) uzinikiweyo.

### 6.1 Sichazele ukuba ngubani uThole

- Uzalwa ngubani uThole? (1)
- Chaza isizathu sokuba uFikizolo ibe nguye okhulise uThole. (1)
- Sixelele ngesinye seziganeko esenzekayo esenze ukuba uThole akhule engamazi utata wakhe. (2)

### 6.2 Sichazele ngendlela akhule ngayo Thole

- Chaza izinto ezenziwe nguThole ezibe nefuthe elibi kuye nakusapho lwakhe. (3)
- Wenze ntoni uFikizolo ngale meko? (2)
- Kubonisa ntoni oku ngolu sapho? (1)

### 6.3 Sichazele ngempumelelo kaThole

- UThole umenzele ntoni uFikizolo akube ephumelele? (1)
- Chaza indlela awaziva ngayo uThole xa ebona utata wakhe awayengasamazi. (1)
- Le ndlela awayeziva ngayo uThole ibonisa ukuba ungumntu onjani? (1)
- UThole umbone utata wakhe ekwimeko enjani? (1)
- Chaza izinto azenzileyo uThole ukuzama ukutshintsha impilo katata wakhe. (2)

### 6.4 Sichazele ngokubuyela kukaThole ekhaya

- Chaza izinto ezenziwa nguFikizolo ukwamkela uThole nosapho lwakhe. (4)

[Isakhiwo sesincoko naso siyakuthathelwa ingqalelo.] (5)  
[25]

<b>70 amanqaku</b>
--------------------



## ICANDELO B

### IMIHLATHI EMIDE

- Phendula ileta ibe **NYE** kwezi zilandelayo.
- Impendulo yakho mayibe phakathi **kwamagama ali-150** ukuya **kumagama ali-180** ubude.
- Bhala phantsi inombolo yombuzo nesihloko.

### UMBUZO 7 ILETA YOBUHLOBO

Umalume wakho ukuthumelele imali yokubhatala zonke iimfuno zakho zetheko lematriki. Mbhalele ileta umbulele.



[Umfanekiso uthatyathwe kwi-intanethi]

Chaphazela ezi ngongoma:

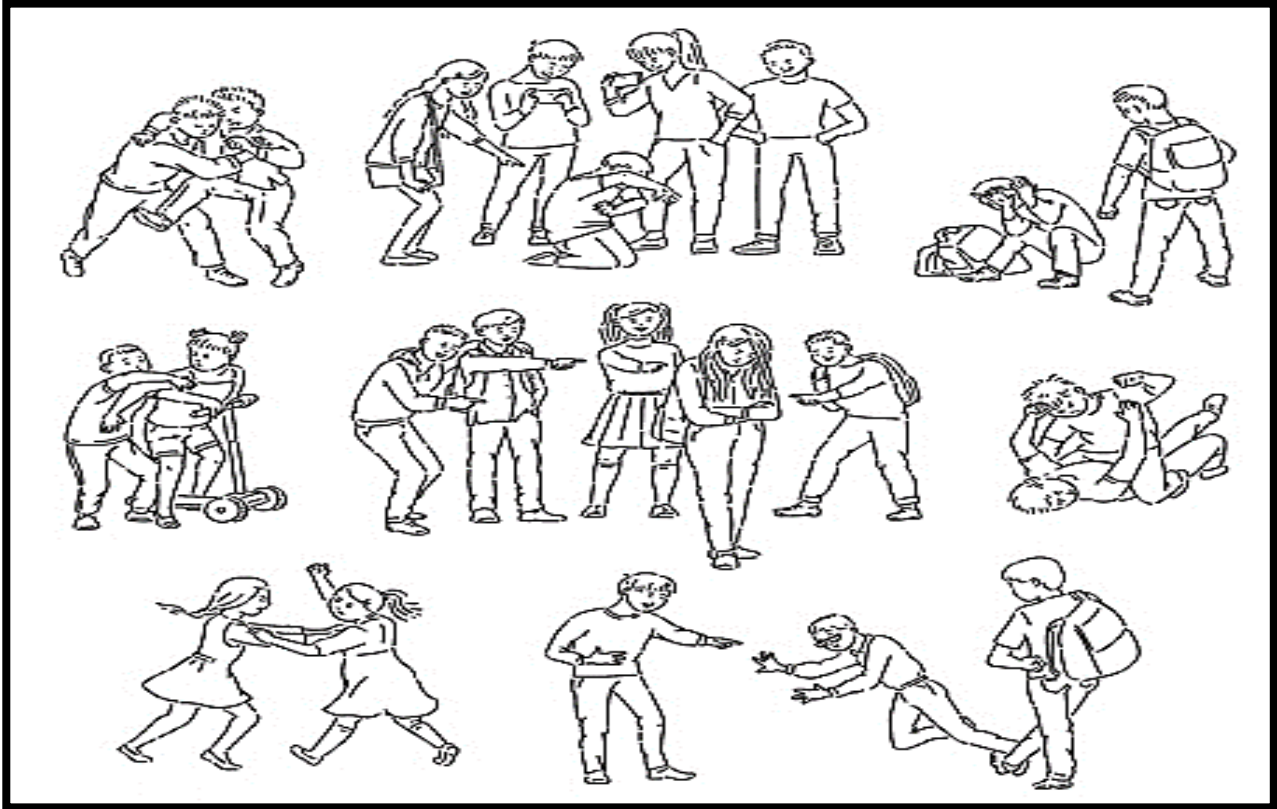
- Mbulele.
- Mxelele ukuba ucinga ukwenza ntoni.
- Mxelele ngendlela avakalelwa ngayo umama wakho ngesi senzo sihle kangaka.

[20]

## OKANYE

## UMBUZO 8 ILETA YOBURHULUMENTE

Ufunde inqaku elinesihloko esithi "**Ubundlobongela phakathi komfundi nomfundi buye busenyukela**". Bhala ileta ubhalele umhleli wephephandaba lasekuhlaleni ubonise ukuxhalaba kwakho ngale meko.



[Umfanekiso uthatyathwe kwi-intanethi]

Chaphazela ezi ngongoma:

- Izinto ezibangela ubundlobongela.
- Kungenziwa ntoni ukunqanda obu bundlobongela.
- Indlela ekuzakwenziwa ngayo.

[20]

OKANYE

## UMBUZO 9 ILETA YOBURHULUMENTE

Bhalela inkampani encedisa abafundi ngezifundo zabo (*Green School South Africa*) ucele ukuba bakuncedise ngeprojekthi yakho yesikolo.



[Umfanekiso uthatyathwe kwi-intanethi]

Chaphazela ezi ngongoma:

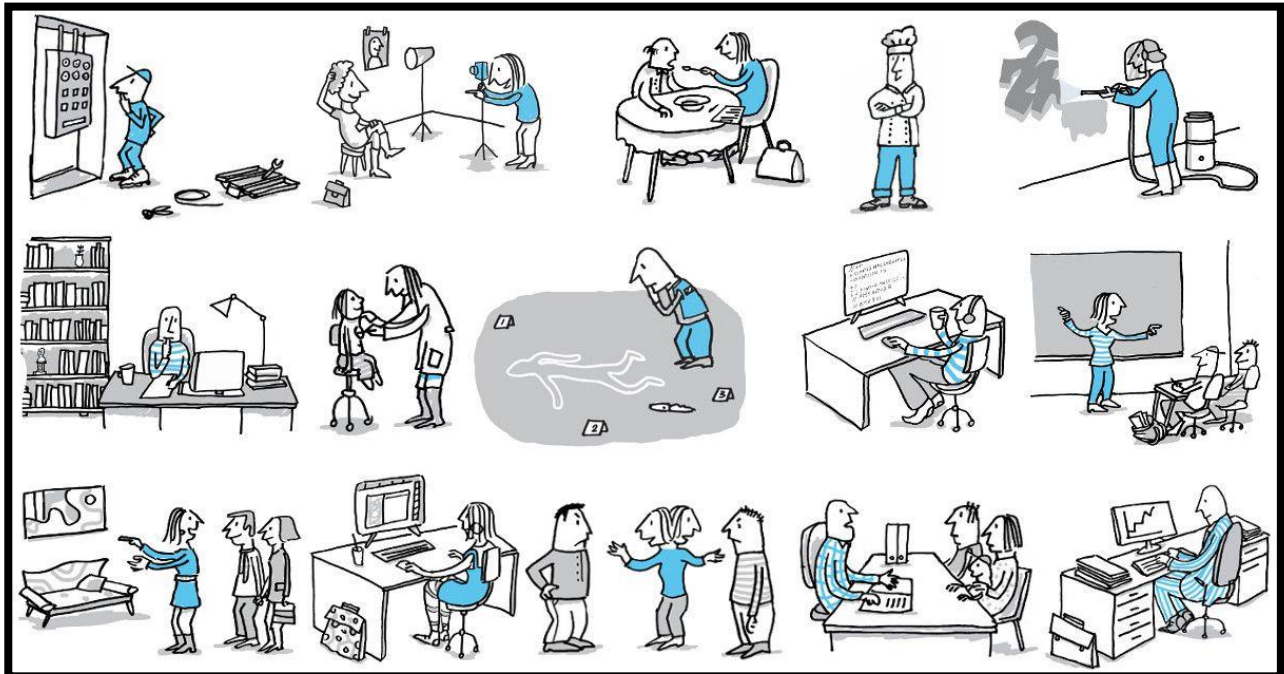
- Isifundo seprojekthi leyo ufuna ukuncedwa ngayo.
- Kutheni ucele bona.
- Ulufumene njani ulwazi ngale nkampani.

[20]

OKANYE

## UMBUZO 10 ILETA YOBUHLOBO

Bhalela umhlobo wakho obufunda naye ohlala kwenye indawo, umxelele ngobomi bakho. Ufundile ngoku kwaye akuwufumani umsebenzi. Mxelele ngezizathu zokuba ungawufumani umsebenzi kodwa ufundile.



[Umfanekiso uthatyathwe kwi-intanethi]

Chaphazela ezi ngongoma:

- Xela ukuba uphi.
- Mxelele ukuba wenze eziphi izifundo.
- Kutheni ungawufumani umsebenzi.
- Mcele akuncedise nisombulule le ngxaki.

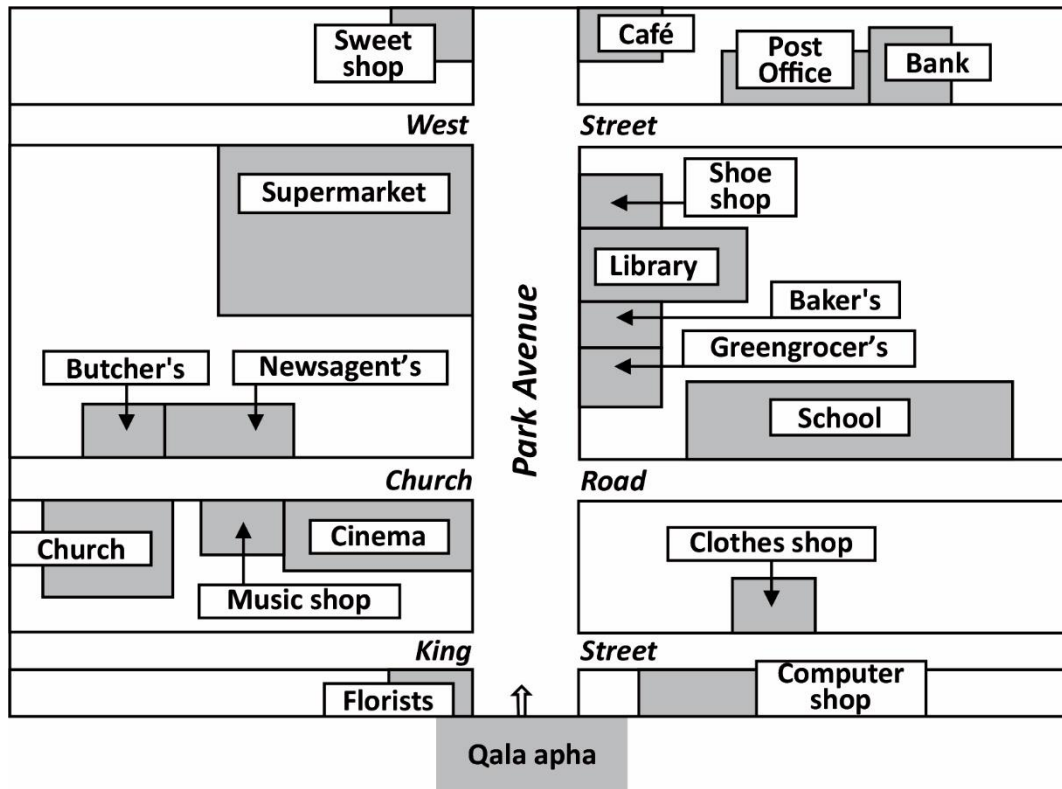
[20]

## IMIHLATHANA EMIFUTSHANE

- Khetha isihloko sibe si**NYE** kwezi zingezantsi uze ubhale umhlathana ngaso.
- Umhlathana wakho kufuneka ube **ngamagama angama-60** ukuya **kumagama angama-80**.

### UMBUZO 11 IZALATHISI

Sebenzisa le maphu ingezantsi ubonise umhlobo wakho indlela eya elayibhrari.



[10]

## OKANYE

### UMBUZO 12 ISIBHENGEZO

Unekhompuyutha ongasayisebenzisiyo kwaye ufuna ukuyithengisa. Bhala isibhengezo esiza kuphuma kwiphephandaba lasekuhlaleni.

Chaza ukuba:

- Loluphi uhlobo lwekhompuyutha.
- Lithini ixabiso layo.
- Mingaphi iminyaka uyisebenzisa.

[10]

30 amanqaku

Amanqaku ewonke: 100